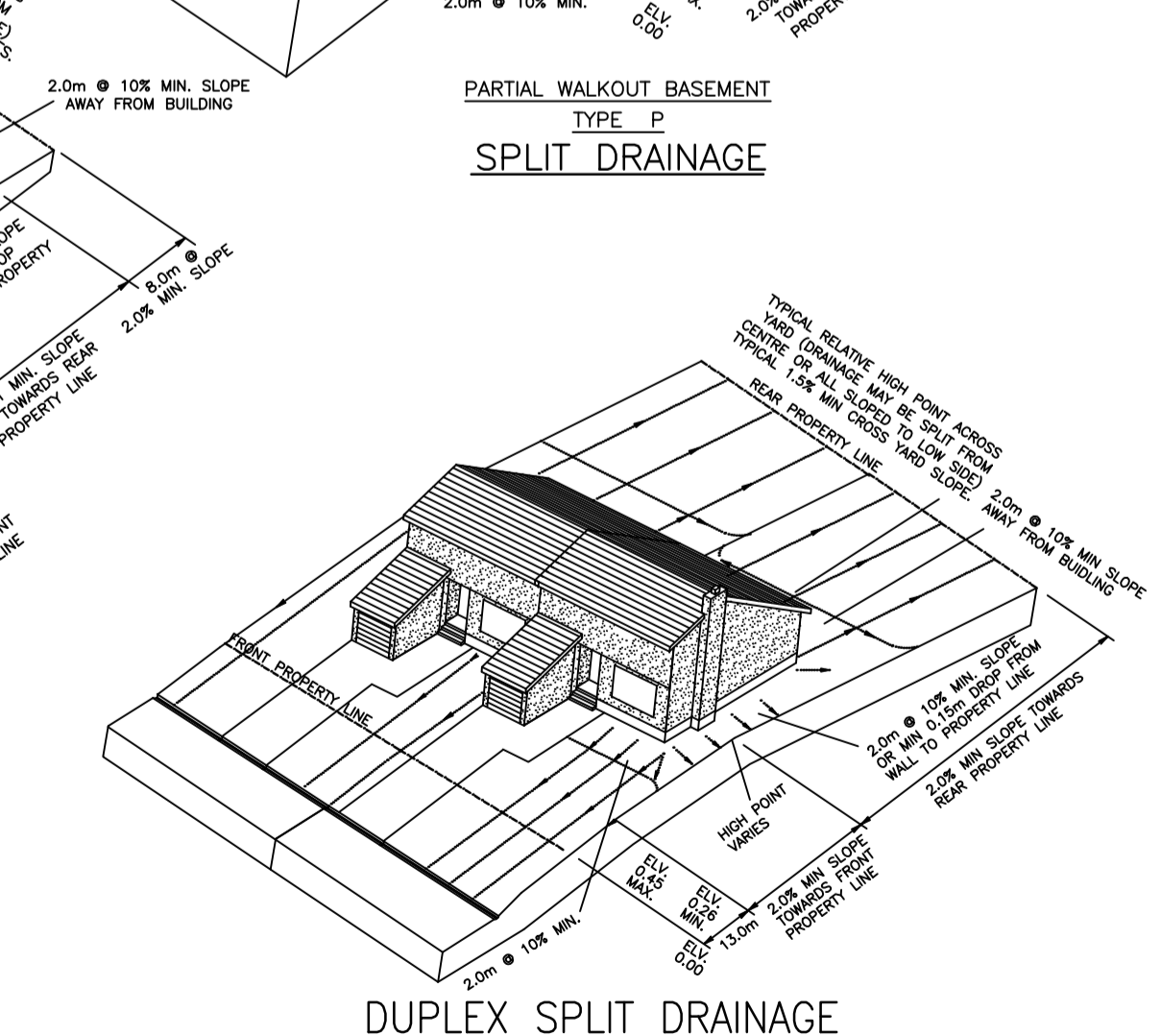
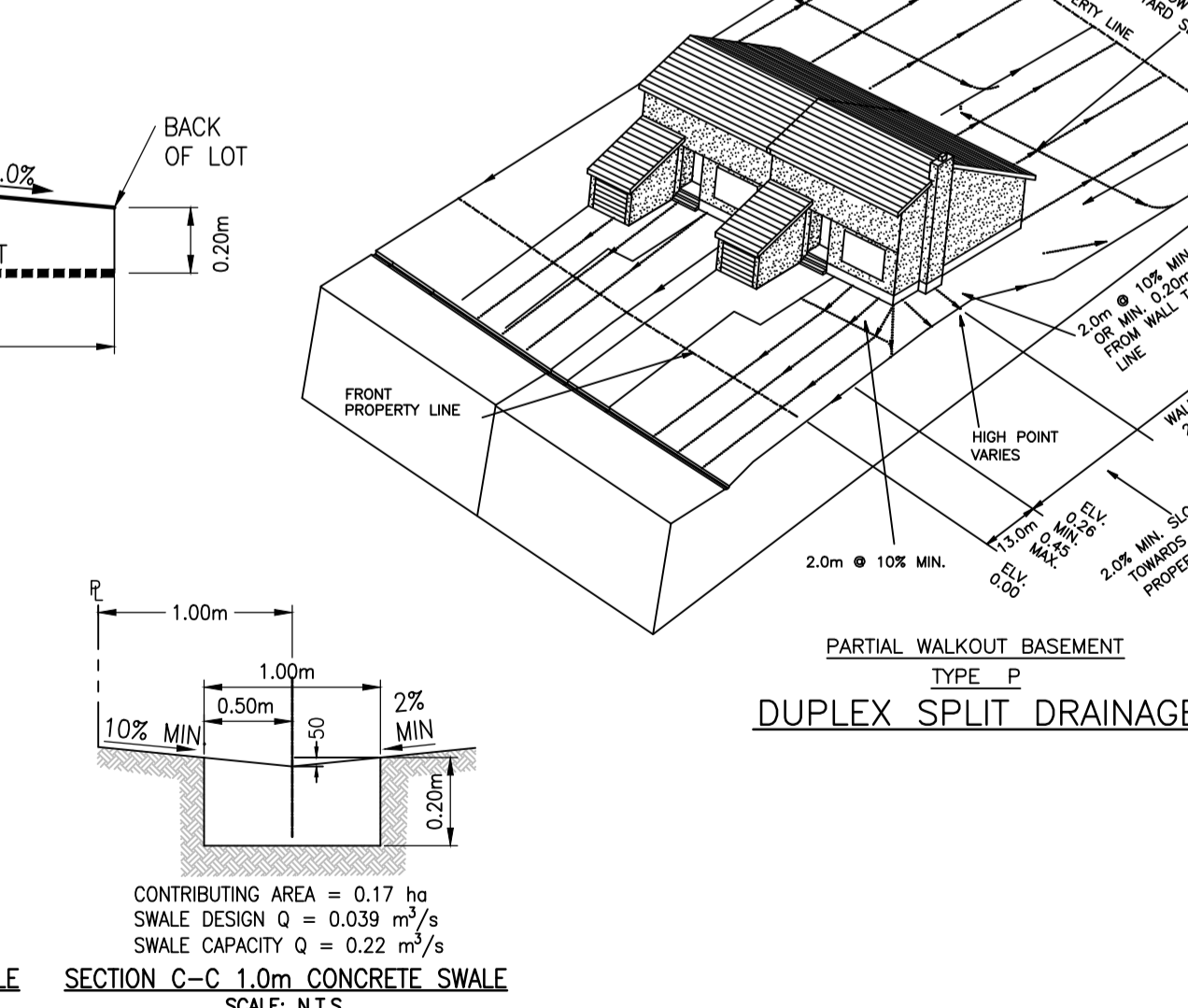
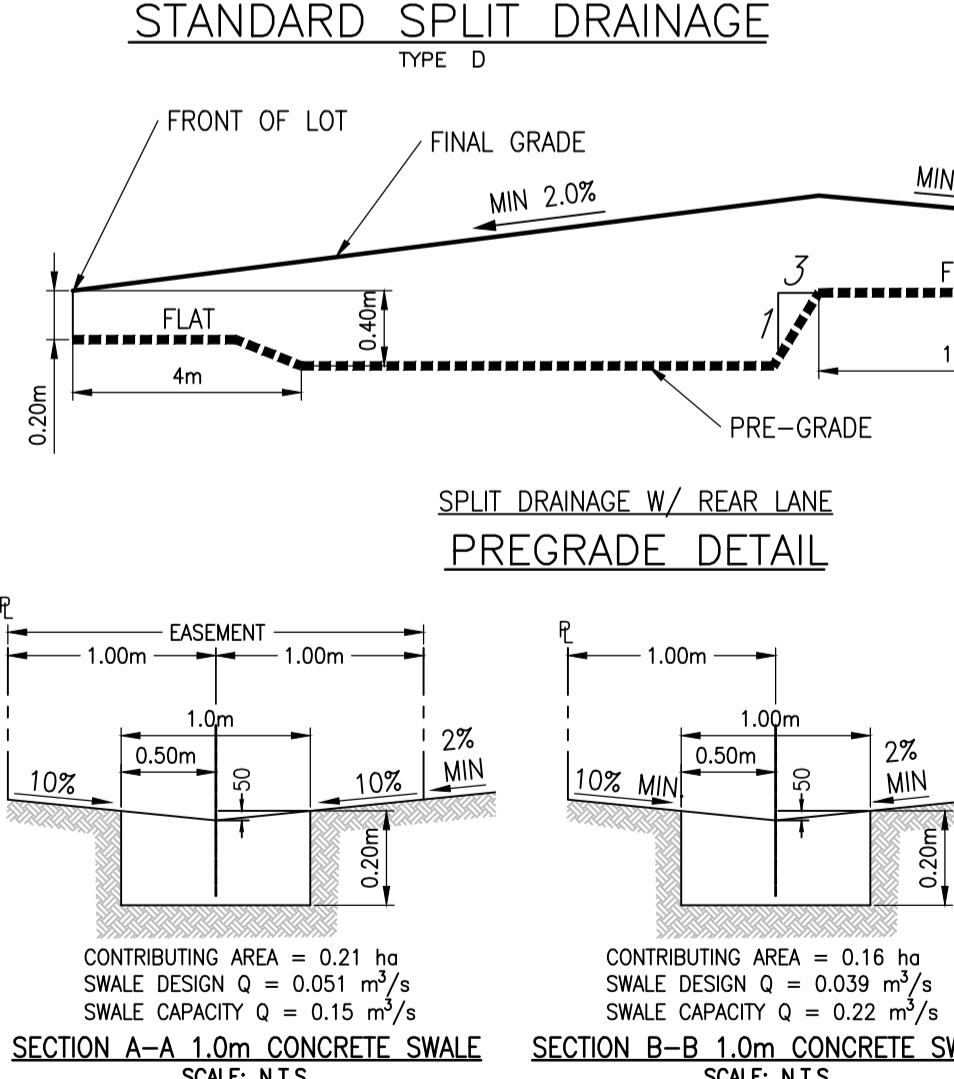
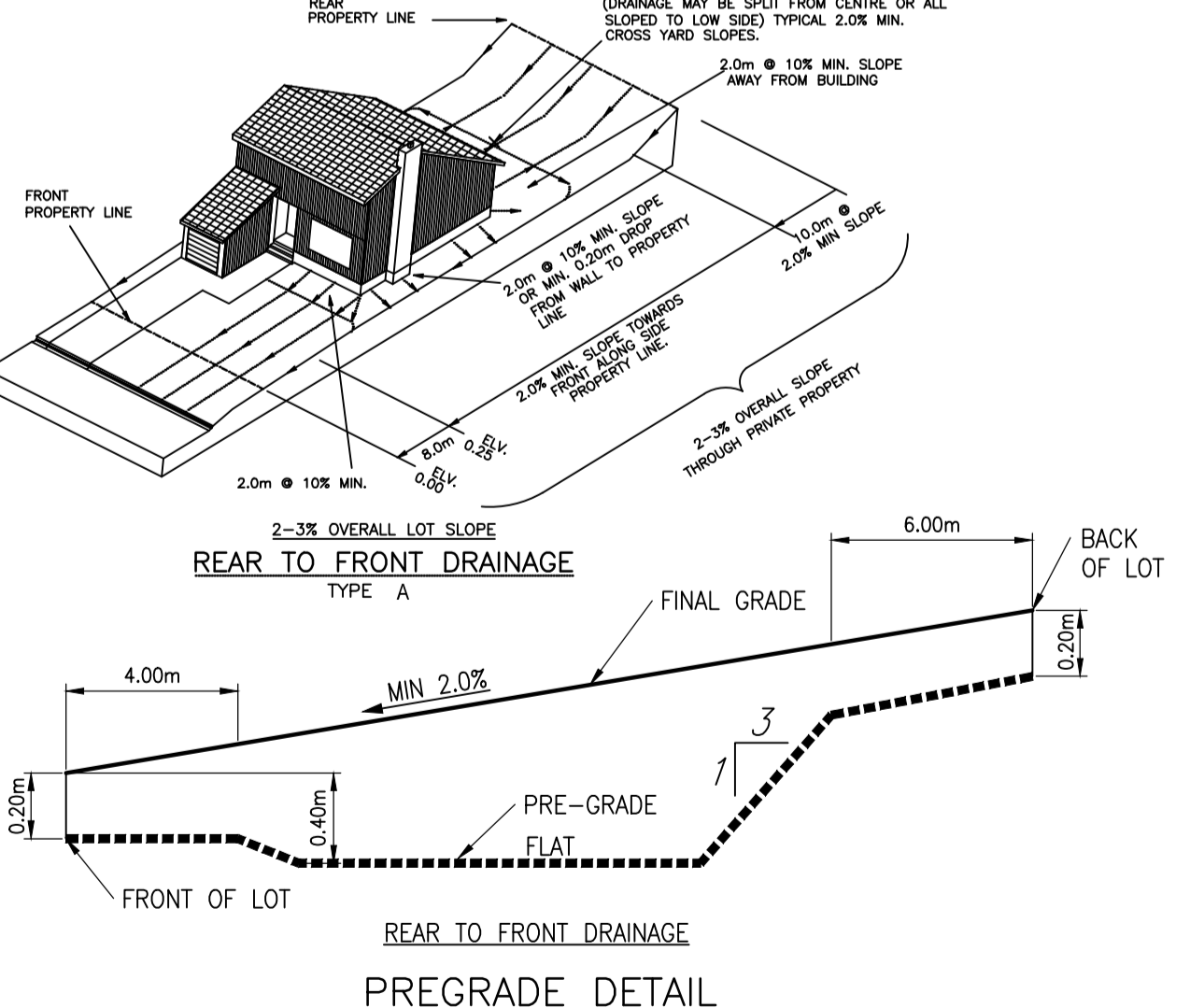
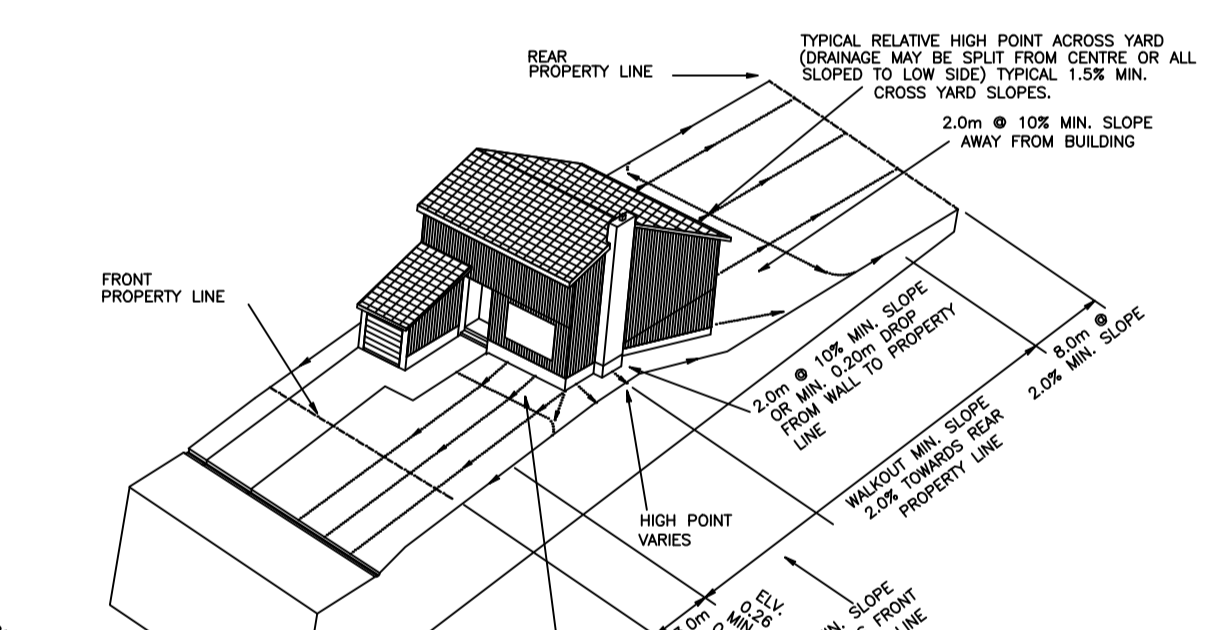
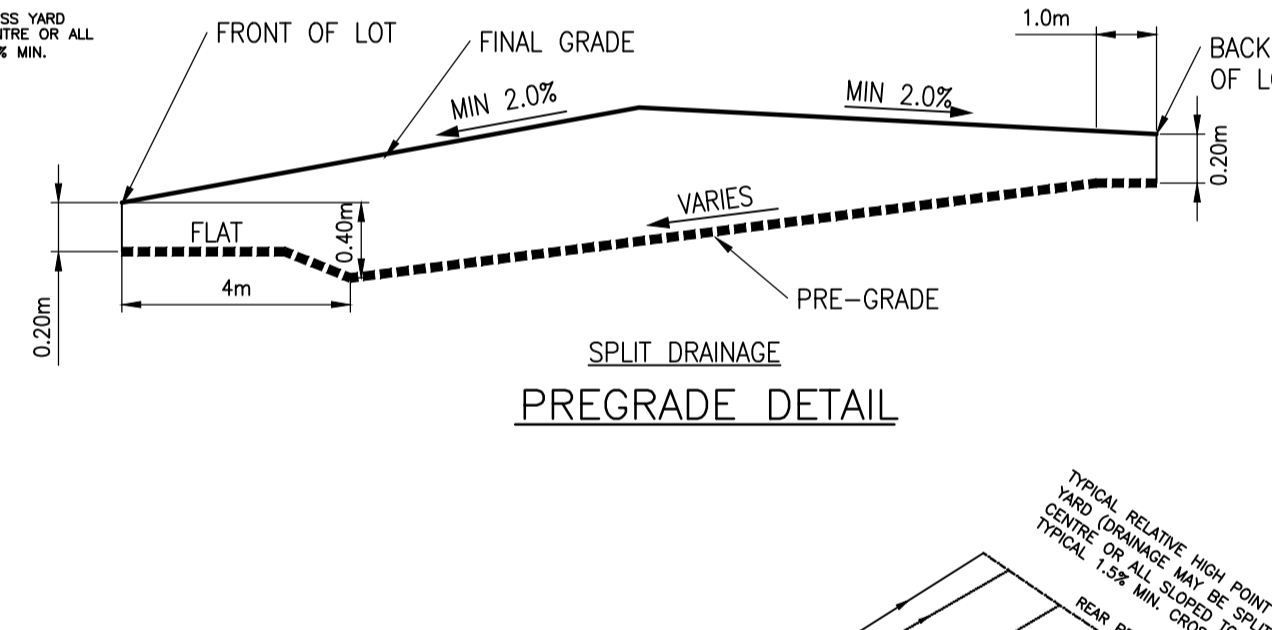
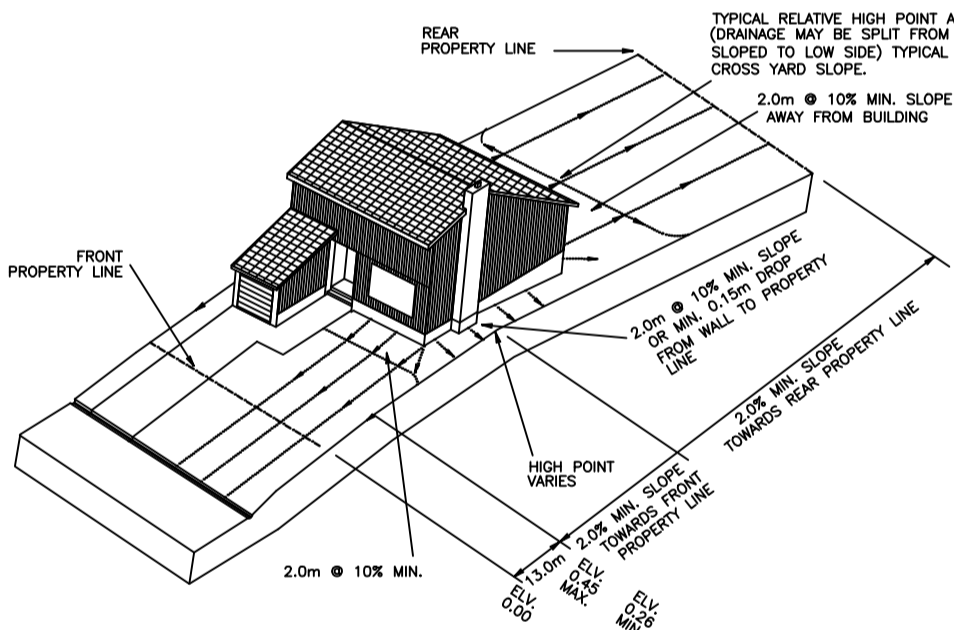
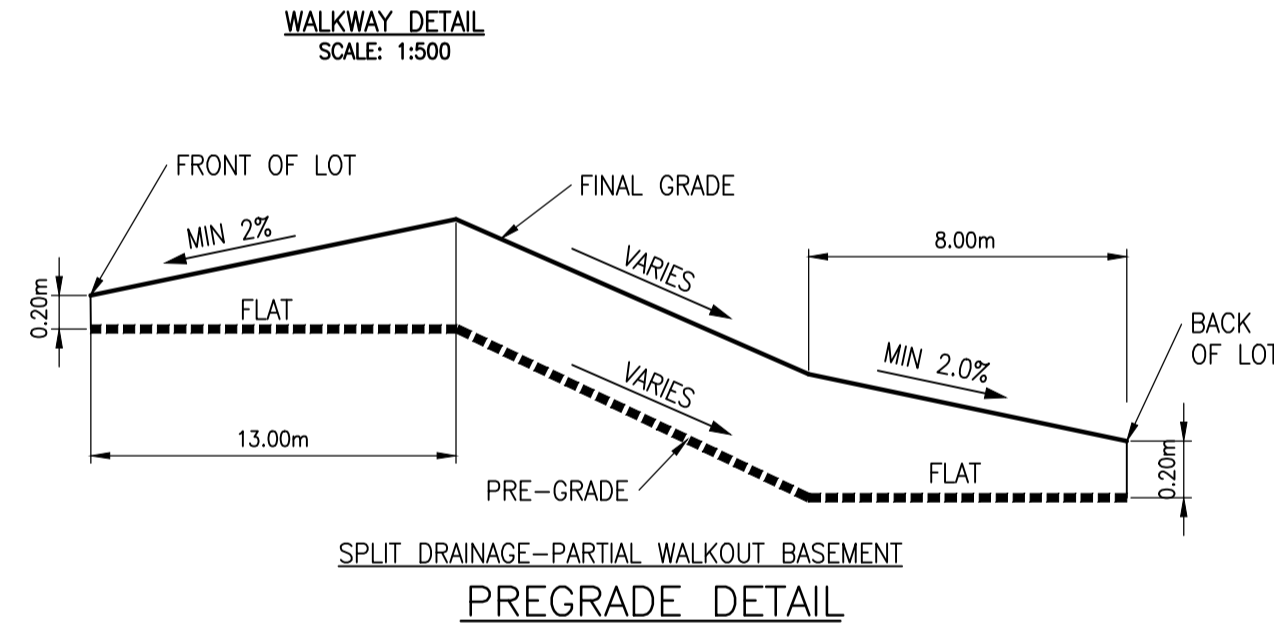
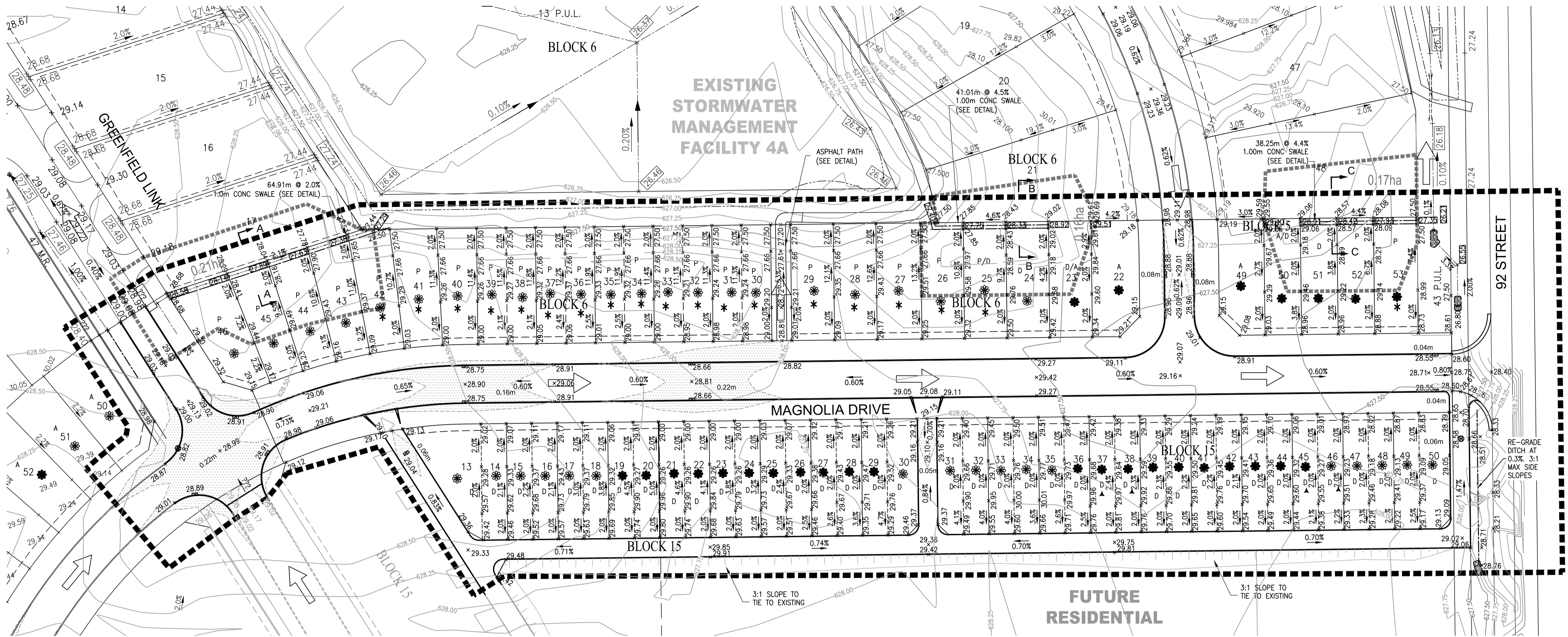
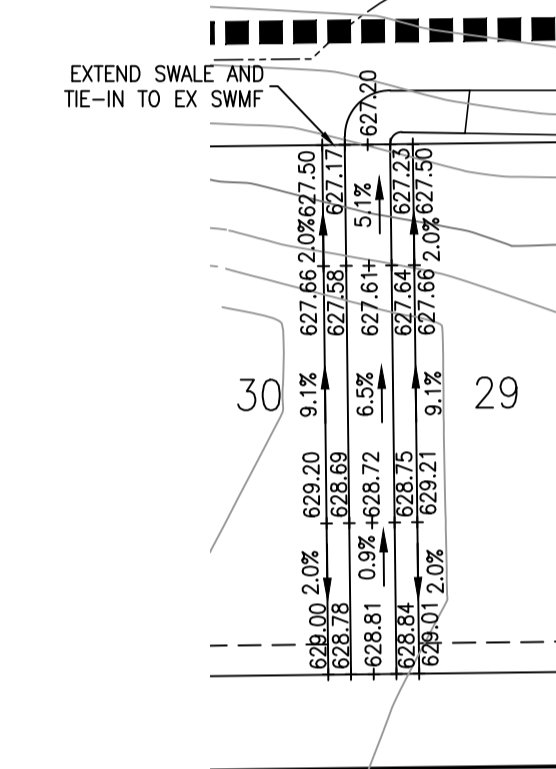


LEGEND:

- STAGE BOUNDARY
- CONSTRUCTION BOUNDARY
- GRADING BOUNDARY
- DESIGN ELEVATION
- FUTURE DESIGN ELEVATION
- DESIGN DITCH/SWALE/CULVERT INVERT ELEVATION
- EXISTING ELEVATION
- DRAINAGE DIRECTION
- FUTURE DRAINAGE DIRECTION
- EXISTING CONTOURS
- MAJOR DRAINAGE DIRECTION
- LOTS WITH 1.0 - 1.5m OF FILL REQUIRED
- LOTS WITH MORE THAN 1.5m OF FILL REQUIRED
- LOTS WITH MIN. FOOTING ELEV. 627.34 AND LOWEST ALLOWABLE OPENING ELEV. 627.64
- OVER EXCAVATE LOT TO APPROXIMATELY 625.00 AND RECOMPACT. SUBJECT TO GEOTECHNICAL ENGINEER RECOMMENDATIONS.

- NOTE:**
- ELEVATIONS SHOWN ARE GEODETIC & ARE REFERRED TO ASCM 17368. ELEVATION 627.724m.
 - SURVEY FOR EXISTING CONTOURS WAS PERFORMED BY THE FOCUS CORPORATION, ON MARCH 20, 2006.
 - SPECIAL FOUNDATION CONSIDERATIONS EXIST WHERE FILL ON BUILDING FOOTING MAY EXCEED 1.5m.
 - FOOTING/GRADING PLANS FOR INDIVIDUAL LOTS TO BE SUBMITTED TO THE CITY BY THE BUILDER.



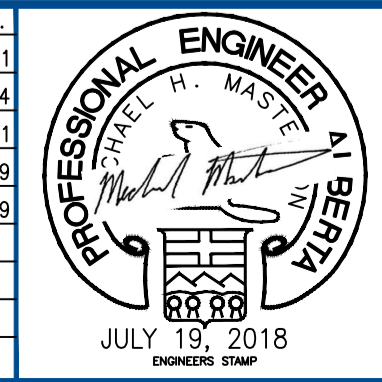
SECTION A-A 1.0m CONCRETE SWALE SCALE: N.T.S.

SECTION B-B 1.0m CONCRETE SWALE SCALE: N.T.S.

SECTION C-C 1.0m CONCRETE SWALE SCALE: N.T.S.

| Lot # | Block # | San/Wat Inv. | Storm Inv. |
|-------|---------|--------------|------------|
| 48 | 15 | 626.05 | 627.20 |
| 47 | 15 | 626.05 | 627.20 |
| 46 | 15 | 625.98 | 627.13 |
| 45 | 15 | 625.98 | 627.13 |
| 44 | 15 | 625.96 | 627.11 |
| 43 | 15 | 625.96 | 627.11 |
| 42 | 15 | 626.03 | 627.18 |
| 41 | 15 | 626.03 | 627.18 |
| 40 | 15 | 626.12 | 627.27 |
| 39 | 15 | 626.12 | 627.27 |
| 38 | 15 | 626.20 | 627.35 |
| 37 | 15 | 626.20 | 627.35 |
| 36 | 15 | 626.14 | 627.29 |
| 35 | 15 | 626.14 | 627.29 |
| 34 | 15 | 626.06 | 627.21 |
| 33 | 15 | 626.06 | 627.21 |
| 32 | 15 | 626.12 | 627.27 |
| 31 | 15 | 626.12 | 627.27 |
| 30 | 15 | 626.19 | 627.34 |
| 29 | 15 | 626.19 | 627.34 |
| 28 | 15 | 626.22 | 627.40 |
| 27 | 15 | 626.18 | 627.33 |
| 26 | 15 | 626.18 | 627.33 |
| 25 | 15 | 626.18 | 627.33 |
| 24 | 15 | 626.18 | 627.33 |
| 23 | 15 | 626.10 | 627.25 |
| 22 | 15 | 626.10 | 627.25 |
| 21 | 15 | 626.10 | 627.25 |
| 20 | 15 | 626.21 | 627.36 |
| 19 | 15 | 626.21 | 627.36 |
| 18 | 15 | 626.30 | 627.45 |
| 17 | 15 | 626.30 | 627.45 |
| 16 | 15 | 626.20 | 627.35 |
| 15 | 15 | 626.20 | 627.35 |
| 14 | 15 | 626.18 | 627.33 |
| 13 | 15 | 626.16 | 627.31 |
| 12 | 15 | 626.32 | 627.75 |
| 11 | 15 | 626.32 | 627.75 |
| 10 | 15 | 626.67 | 628.02 |
| 9 | 15 | 626.67 | 628.02 |
| 8 | 15 | 626.50 | 627.87 |
| 7 | 15 | 626.50 | 627.87 |
| 6 | 15 | 626.57 | 627.92 |
| 5 | 15 | 626.57 | 627.92 |
| 4 | 15 | 626.57 | 627.92 |
| 3 | 15 | 626.67 | 627.98 |
| 2 | 15 | 626.67 | 627.98 |
| 1 | 15 | 626.67 | 627.98 |
| 50 | 7 | 626.20 | 627.55 |
| 51 | 15 | 625.98 | 627.13 |
| 52 | 15 | 625.98 | 627.13 |
| 53 | 15 | 625.96 | 627.11 |
| 54 | 15 | 625.96 | 627.11 |
| 55 | 15 | 626.06 | 627.21 |
| 56 | 15 | 626.06 | 627.21 |
| 57 | 15 | 626.12 | 627.27 |
| 58 | 15 | 626.12 | 627.27 |
| 59 | 15 | 626.20 | 627.35 |
| 60 | 15 | 626.20 | 627.35 |

| REVISION NO. | DESCRIPTION | BY | APP'D. | YY.MM.DD. |
|--------------|---------------------------|--------|--------|------------|
| A | ISSUED FOR GRADING PERMIT | R.J.L. | D.L.K. | 2015.05.01 |
| B | ISSUED FOR REVIEW | P.D.N. | D.L.K. | 2015.05.14 |
| C | ISSUED FOR APPROVAL | P.D.N. | D.L.K. | 2015.12.01 |
| D | ISSUED FOR APPROVAL | M.M. | D.E.K. | 2018.06.19 |
| E | ISSUED FOR CONSTRUCTION | R.K. | M.M. | 2018.07.19 |



PERMIT TO PRACTICE
WSP CANADA INC.

Signature: *M. M. M. M.*

Date: JULY 19, 2018

PERMIT NUMBER: P07641

The Association of Professional Engineers and Geoscientists of Alberta

CONDITIONALLY APPROVED BY J. FAREBROTHER ON JULY 18, 2018

SCALE: 1:1000



Client
SOUTHFORT DEVELOPMENT CORP.

Project
**SOUTHFORT MEADOWS STAGE 5
FORT SASKATCHEWAN, ALBERTA**

LOT GRADING PLAN

| Designed | Scale | Date |
|----------|---------------|------------|
| L.E.K. | 1:750 | JUNE, 2018 |
| Drawn | Project No. | |
| D.E.K. | 060201054-120 | |
| Checked | Drawing No. | Rev. |
| M.M. | C05 | E |
| Approved | | |