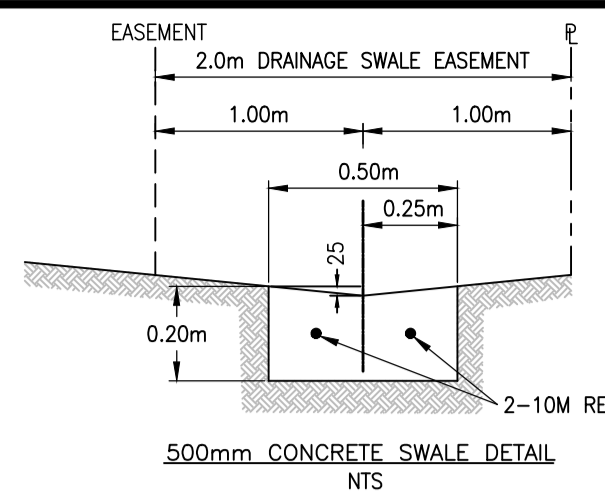


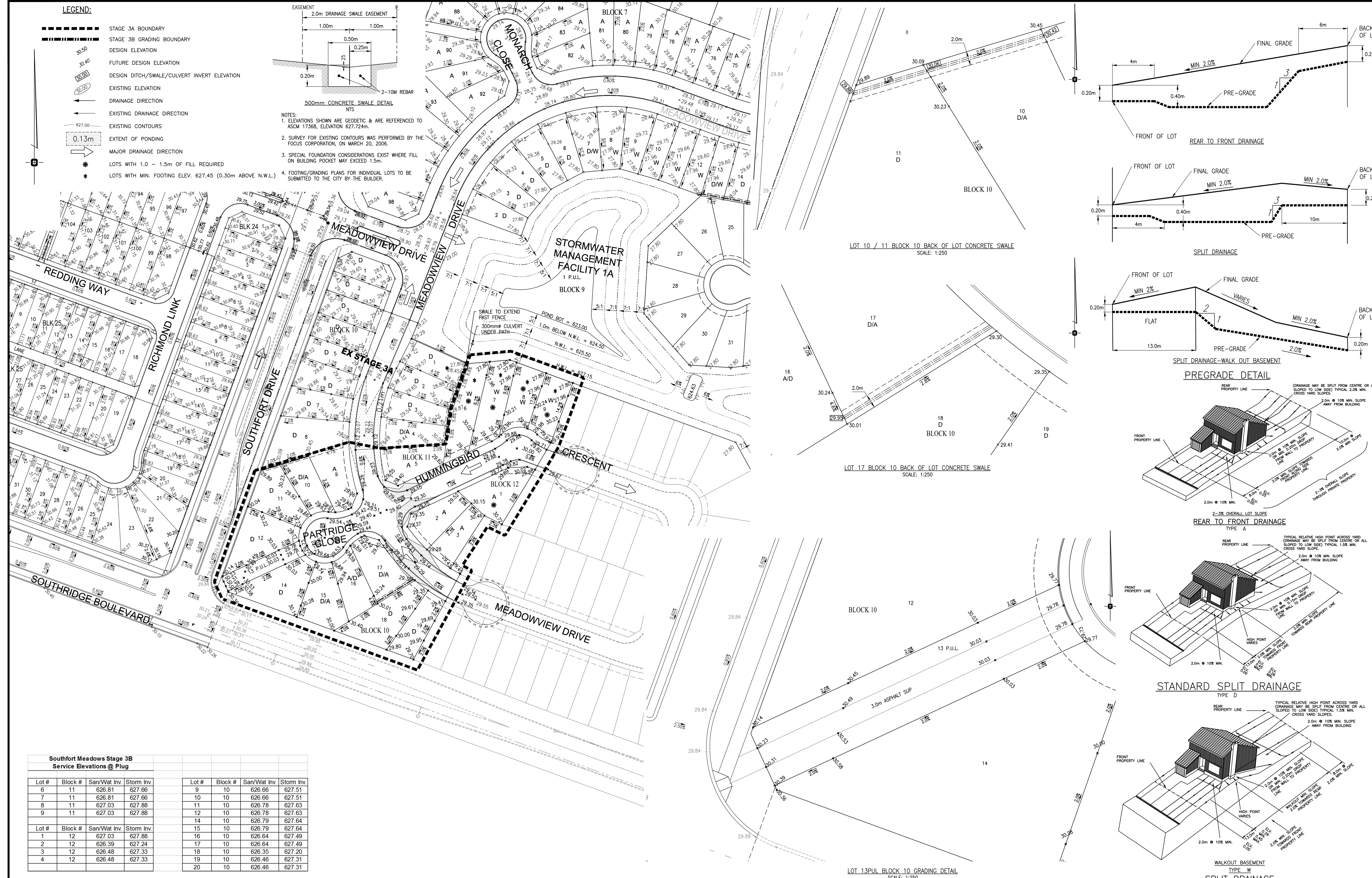
LEGEND:

- STAGE 3A BOUNDARY
- STAGE 3B GRADING BOUNDARY
- 30.50 DESIGN ELEVATION
- 30.40 FUTURE DESIGN ELEVATION
- 30.30 DESIGN DITCH/SWALE/CULVERT INVERT ELEVATION
- 30.20 EXISTING ELEVATION
- DRAINAGE DIRECTION
- EXISTING DRAINAGE DIRECTION
- 627.00 EXISTING CONTOURS
- 0.13m EXTENT OF PONDING
- MAJOR DRAINAGE DIRECTION
- ★ LOTS WITH 1.0 - 1.5m OF FILL REQUIRED
- ★ LOTS WITH MIN. FOOTING ELEV. 627.45 (0.30m ABOVE N.W.L.)

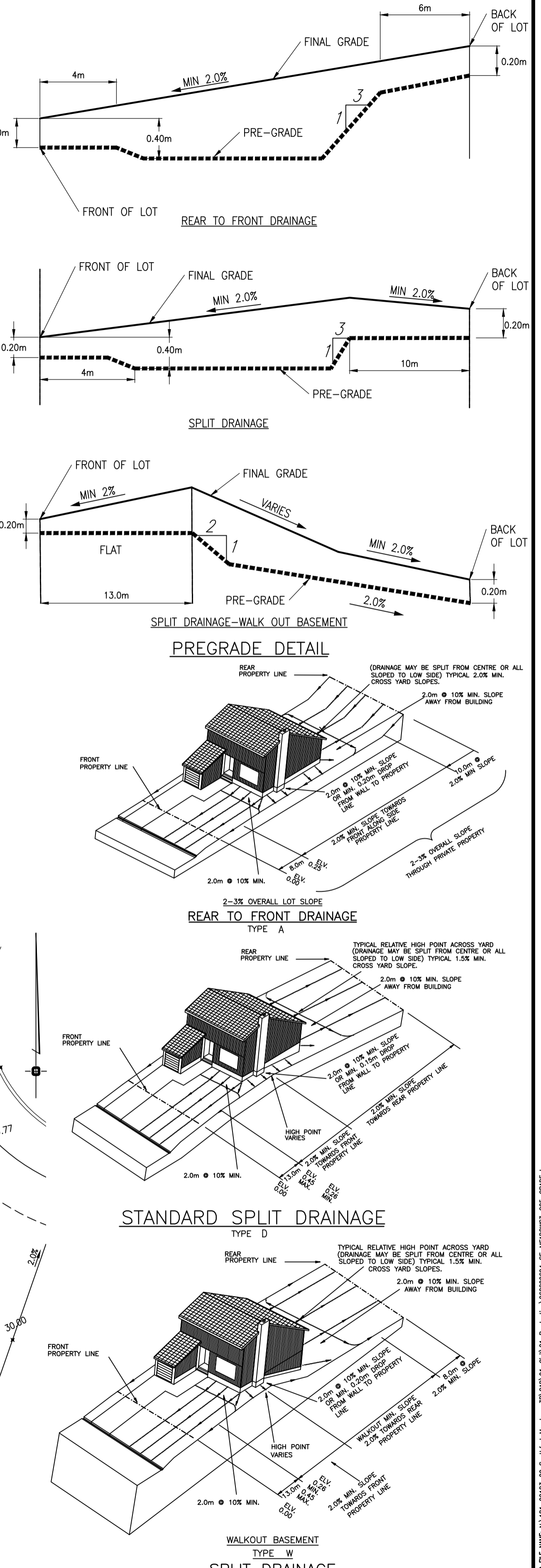


NOTES:

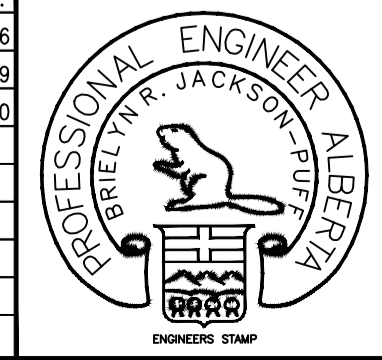
- ELEVATIONS SHOWN ARE GEODETIC & ARE REFERENCED TO ASCM 17368, ELEVATION 627.724m.
- SURVEY FOR EXISTING CONTOURS WAS PERFORMED BY THE FOCUS CORPORATION, ON MARCH 20, 2006.
- SPECIAL FOUNDATION CONSIDERATIONS EXIST WHERE FILL ON FOOTING POCKET MAY EXCEED 1.5m.
- FOOTING/GRADING PLANS FOR INDIVIDUAL LOTS TO BE SUBMITTED TO THE CITY BY THE BUILDER.



Lot #	Block #	San/Wat Inv.	Storm Inv.	Lot #	Block #	San/Wat Inv.	Storm Inv.
6	11	626.81	627.66	9	10	626.66	627.51
7	11	626.81	627.66	10	10	626.66	627.51
8	11	627.03	627.88	11	10	626.78	627.63
9	11	627.03	627.88	12	10	626.78	627.63
				14	10	626.79	627.64
				15	10	626.79	627.64
1	12	627.03	627.88	16	10	626.64	627.49
2	12	626.39	627.24	17	10	626.64	627.49
3	12	626.48	627.33	18	10	626.35	627.20
4	12	626.48	627.33	19	10	626.46	627.31
				20	10	626.46	627.31

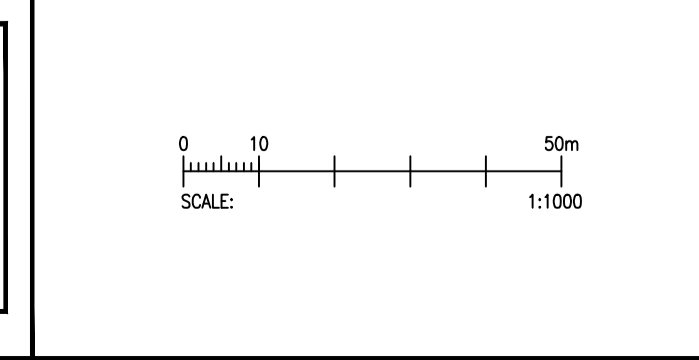


REVISION NO.	DESCRIPTION	BY	APP'D.	YY.MM.DD.
A	ISSUED FOR FIRST SUBMISSION	S.C.M.	L.K.	2018.02.16
B	ISSUED FOR APPROVAL	K.M.	B.J.P.	2018.04.19
C	ISSUED FOR CONSTRUCTION	C.A.	B.J.P.	2018.05.10



PERMIT TO PRACTICE
 WSP CANADA INC.

Signature _____
 Date _____
 PERMIT NUMBER: P07641
 The Association of Professional Engineers and Geoscientists of Alberta



Client
SOUTHFORT DEVELOPMENT CORP.

Project
SOUTHFORT MEADOWS STAGE 3B
 FORT SASKATCHEWAN
LOT GRADING PLAN

Designed	Scale	Date
P.D.N.	1:1000	MAY, 2018
Drawn	Project No.	
B.C.	181-00183-00	
Checked	Drawing No.	Rev.
B.J.P.	C05	0
Approved		
L.K.		